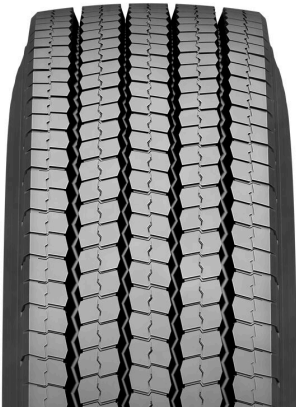


NOKTOP CITY

Winter tread for demanding year-round city bus use

PRODUCT CODES	T672650, T672658, T672659, T672896, T672897, T672903, T672905
APPLICATION	Drive
USAGE	Urban, Snow/ice



TECHNICAL DATA

Product code	Name	Width	Length	Pattern depth		Weight
T672650	Nokian Tyres Noktop City 240	9.4 in	131.9 in	0.8 in	3.7 lb/foot	40 lb/pcs
T672658	Nokian Tyres Noktop City 250	9.8 in	131.9 in	0.8 in	3.8 lb/foot	40 lb/pcs
T672659	Nokian Tyres Noktop City 260	10.2 in	131.9 in	0.8 in	3.9 lb/foot	45 lb/pcs
T672896	Nokian Tyres Noktop City 230	9.1 in	131.9 in	0.8 in	3.5 lb/foot	40 lb/pcs
T672897	Nokian Tyres Noktop City 240 Short	9.4 in	122.6 in	0.8 in	3.7 lb/foot	40 lb/pcs
T672903	Nokian Tyres Noktop City 230 Short	9.1 in	119.9 in	0.8 in	3.6 lb/foot	35 lb/pcs
T672905	Nokian Tyres Noktop City 250 Short	9.8 in	118.1 in	0.8 in	3.9 lb/foot	40 lb/pcs

WINTER MARKINGS	M+S, SnowGrip
-----------------	---------------

NOKIAN TYRES PLC is a full member of ETRTO and affiliated member of TRA. In design and production, we certify that products made in Nokian factory (YL) are according the ETRTO and TRA standards.

The tire has been manufactured and tested in accordance with the requirements of ISO 9001 and ISO 14001. Nokian Tyres Plc has the following certificates:

- Quality Management System Standard, ISO 9001, Certificate No: 76363-2010-AQ-FIN-FINAS
- Environmental Management System Standard, ISO 14001, Certificate No: 76361-2010-AE-FIN-FINAS